

# MAGIC 300

Fabrics, Leather and Eco-leather for Chairs, Sofas and Beds

- selection for UK -

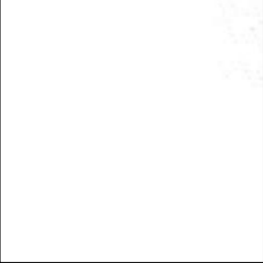


**BONALDO**

Indy  

Category: 600

Composition: 100% CO



67A



67B



67Y



67D



67G



67F



67E



68A



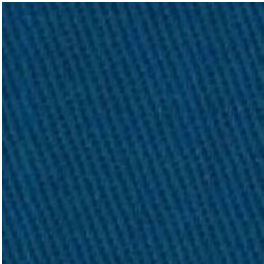
68B



67V



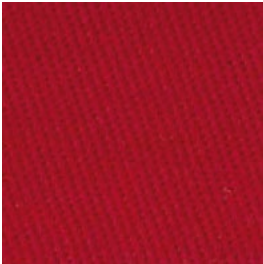
67T



67U



67N



67J



## Eco-leather Secret

Category: 800

Composition: 76% PVC, 22% PES, 2% PU



330



343



359



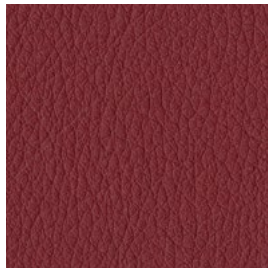
344



340



373



371



358



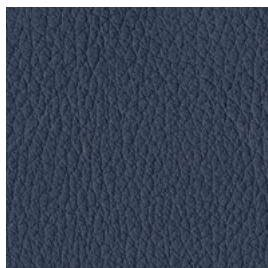
369



354



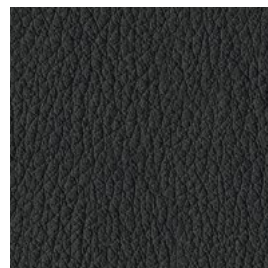
370



353



356



341

## Milos

Category: 900

Composition: 60% CO, 40% LI



98A



98D



98F



98L



98N



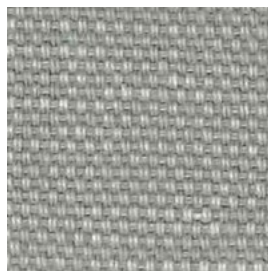
98U



98T



98Y



98B



98J

## Rico

Category: Must

Composition: 56% CO, 30% VI, 14% LI



MA01



MA02



MA20



MA05



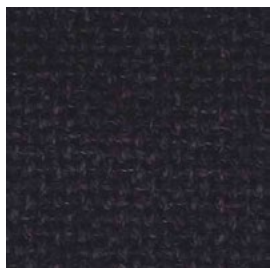
MA06



MA21



MA11



MA10



MA09



MA07



Creta 

Category: 900

Composition: 63% CO, 37% LI



96C



96D



9A77



9A72



9A68



96L



96W



9A76



9A64



96E



96Y



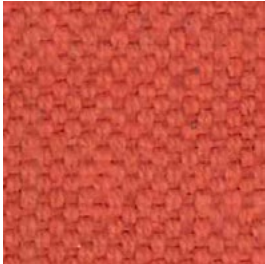
97A



96Z



97B



96P

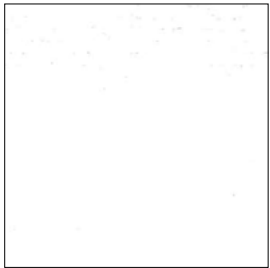


96R

## Ego

Category: *Class*

Composition: 63% VI, 18% PL, 12% CO, 7% LI



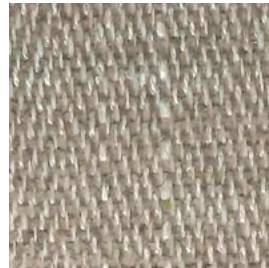
EA73



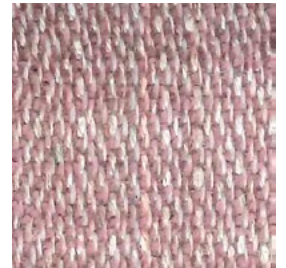
E58



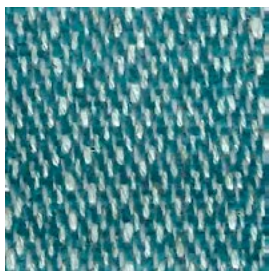
EA68



EA72



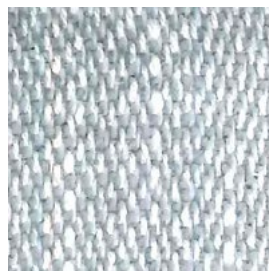
E62



E60



EA66



E59

## Avenida

Category: *Class*

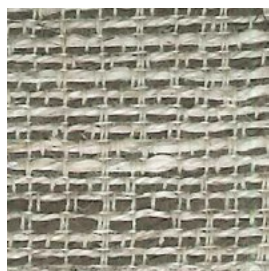
Composition: 30% CO, 30% VI, 26% PL, 14% LI



EA45



EA56



EA46



EA47



EB03



EA48

Lux   
Category: *Must*  
Composition: 100% CO



MC01



MC02



MC04



MC14



MC17



MC20



MC33



MC23



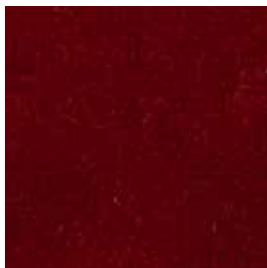
MC25



MC12



MC10



MC09



MC08



MC05



MC27



MC19



MC29



MC32



## Damié

Category: *Must*

Composition: 47% CO, 35% VI, 18% LI



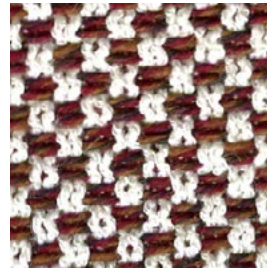
M72



M86



M84



MC35



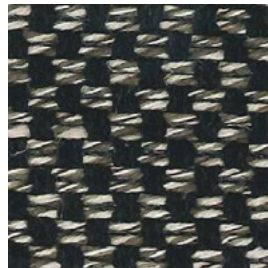
M75



M98



M74



M73

## Brera-Wonderful

Category: *Must*

BRERA Composition: 64% VI, 15% PL, 11% CO, 10% LI

WONDERFUL Composition: 60% LI, 40% CO



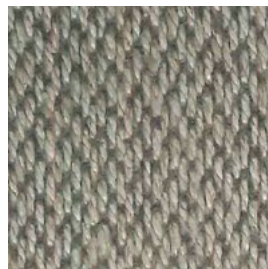
BRERA

MA43



WONDERFUL

MA37



BRERA

MA40



BRERA

MA45



WONDERFUL

MA34



BRERA

MA42



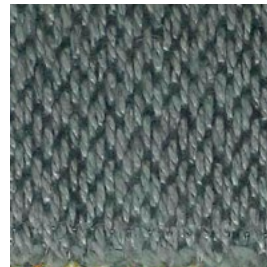
WONDERFUL

MA35



BRERA

MA44



BRERA

MA39



WONDERFUL

MA38



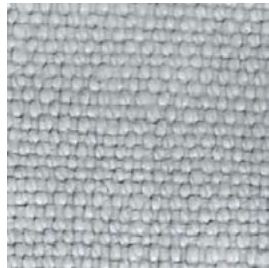
*Linus*   
Category: *Class*  
Composition: *100% LI*



SA17



SA18



SA27



SA26



SA25



SA23



SA35



SA34



SA30



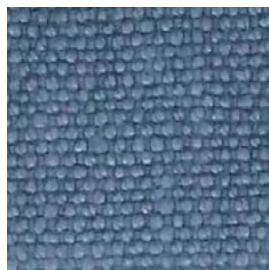
SA36



SA37



SA38



SA20



SA21

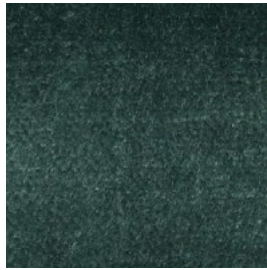
## Vegas

Category: *Must*

Composition: 55% VI, 45% CO



MB02



MB11



MB12



MB13



MB15



MB04



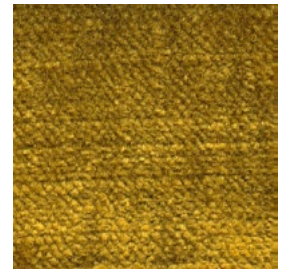
MB10



MB07



MB08



MB17

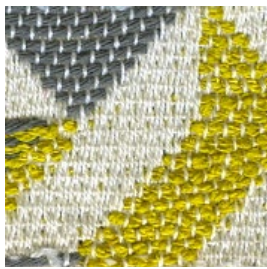
## Rakam

Category: *Must*

Composition: 72% CO, 15% VI, 8% LI, 5% PA



MC50



MC52



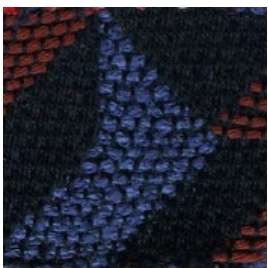
MC53



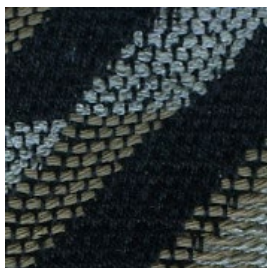
MC51



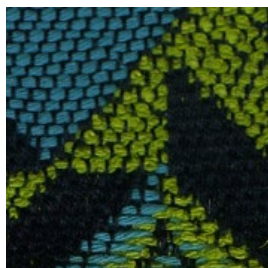
MC54



MC57



MC58



MC55



## St. Moritz

Category: *Must*

Composition: 80% WO, 20% PA



MC61



MC79



MC78



MC80



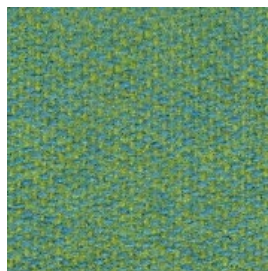
MC84



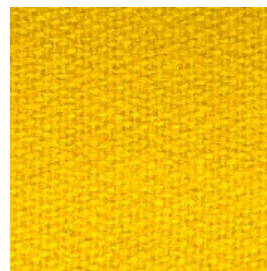
MC74



MC75



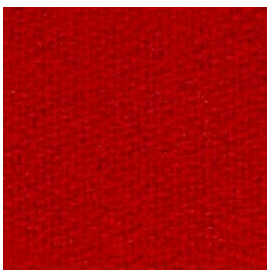
MC86



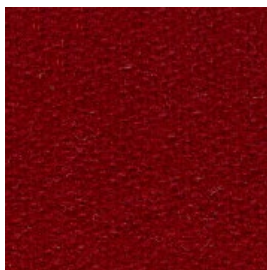
MC66



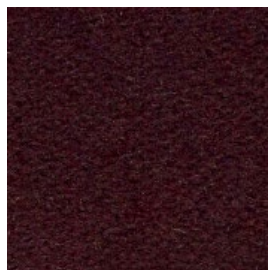
MC67



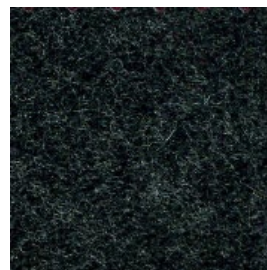
MC68



MC69



MC72



MC83



MC82




MC87

**Albia - Mamba**

Category: *Class* - ALBIA Composition: 63% CO, 20% VI, 10% LI, 7% PA 

Category: *Must* - MAMBA Composition: 60% CO, 25% VI, 15% LI 

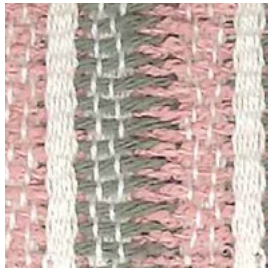
BULIO Composition: 72% CO, 15% VI, 8% LI, 5% PA 



MAMBA M92



ALBIA EA59



BULIO M87



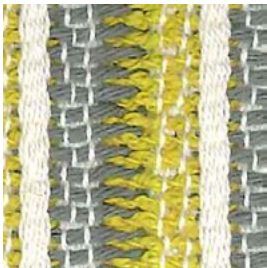
MAMBA M91



ALBIA EA58



MAMBA M96



BULIO M89



ALBIA EA64



MAMBA M95



ALBIA EA63



ALBIA EA62



BULIO M88



MAMBA M94



ALBIA EA61



MAMBA M97



ALBIA EA65



*Colpes - Fred*

Category: *Must*

ROMANOV Composition: 62% CO, 20% VI, 11% LI, 7% PA  

FRED Composition: 35% CO, 28% VI, 22% PL, 15% LI   

FLUTTER Composition: 58% CO, 27% VI, 15% LI   



ROMANOV MA82



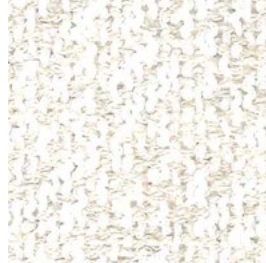
ROMANOV MA77



FRED MA63



FRED MA67



FLUTTER MA52



FLUTTER MA56



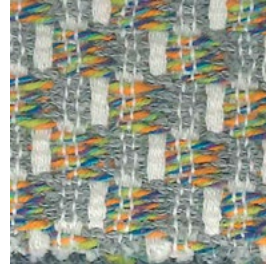
FLUTTER MA54



ROMANOV MA80



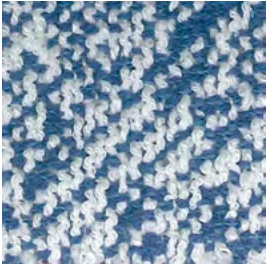
ROMANOV MA76



FRED MA62



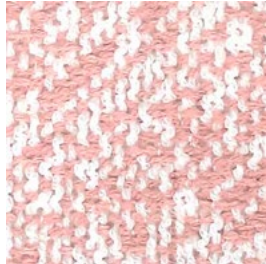
FRED MA64



FLUTTER MA57



FLUTTER MA53



FLUTTER MA58






## Oesis - Naos

Category: *Must*

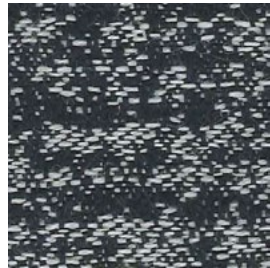
OXFORD Composition: 50% WO, 40% CO, 10% PA   

DELAIN Composition: 55% WO, 37% CO, 8% PA  

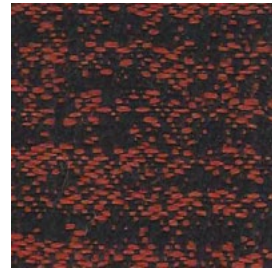
OESIS Composition: 35% VI, 24% PL, 23% CO, 18% LI   



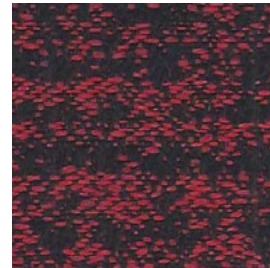
OXFORD MB40



OXFORD MB38



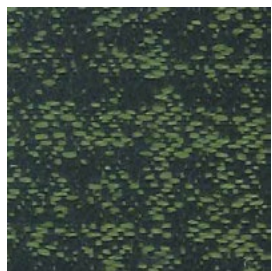
OXFORD MB36



OXFORD MB37



OXFORD MB39



OXFORD MB35



DELAIN MB24



DELAIN MB57



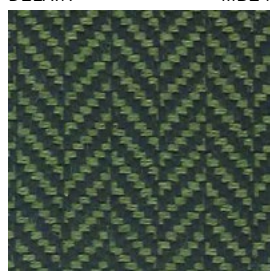
DELAIN MB22



DELAIN MB23



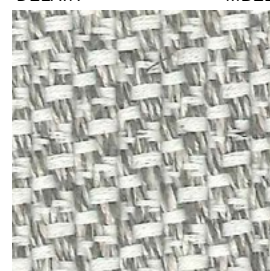
DELAIN MB25



DELAIN MB21



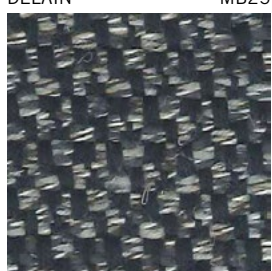
OESIS MB51



OESIS MB55



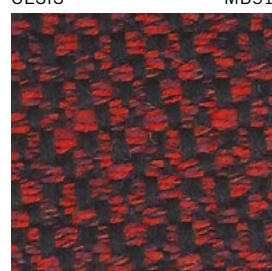
OESIS MB54



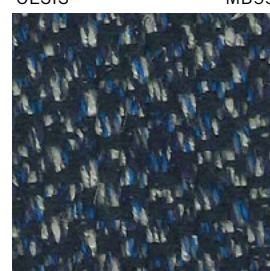
OESIS MB52



OESIS MB47



OESIS MB48



OESIS MB53



OESIS MB49



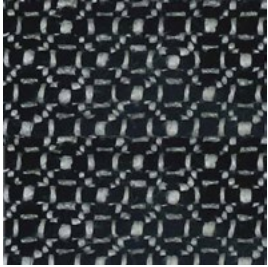
## Pixel

Category: *Class*

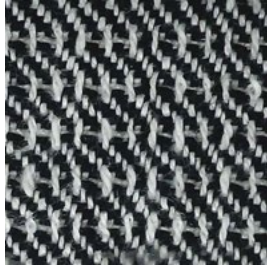
PIXEL ROMBO, PIXEL DIAGONALE Composition: 48% LI, 47% CO, 5% AF

PIXEL GALLES Composition: 95% CO, 5% AF

PIXEL RETE, PIXEL UNITO Composition: 48% LI, 47% CO, 5% AF



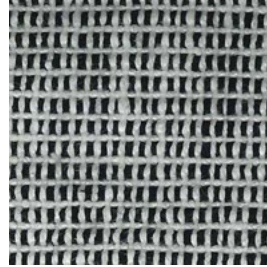
PIXEL ROMBO SA64



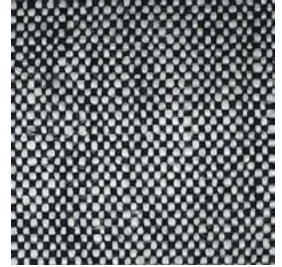
PIXEL DIAGONALE SA80



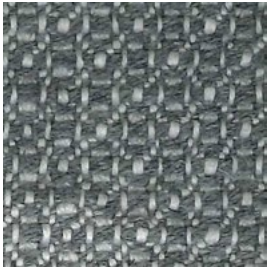
PIXEL GALLES SA60



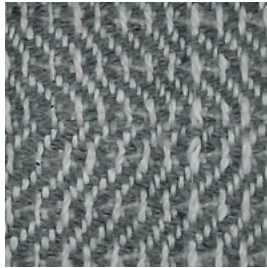
PIXEL RETE SA68



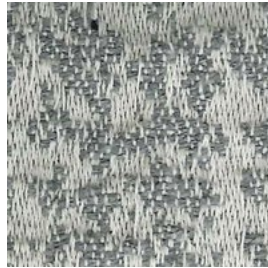
PIXEL UNITO SA72



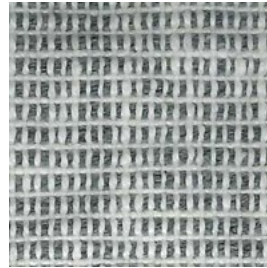
PIXEL ROMBO SA65



PIXEL DIAGONALE SA81



PIXEL GALLES SA61



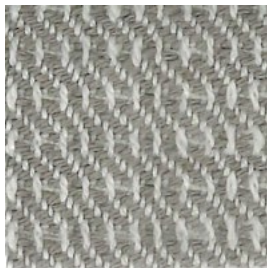
PIXEL RETE SA69



PIXEL UNITO SA73



PIXEL ROMBO SA62



PIXEL DIAGONALE SA78



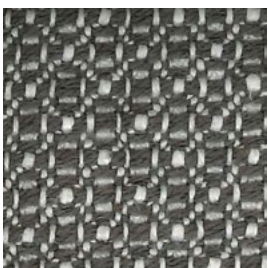
PIXEL GALLES SA58



PIXEL RETE SA66



PIXEL UNITO SA70



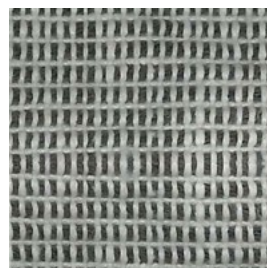
PIXEL ROMBO SA63



PIXEL DIAGONALE SA79



PIXEL GALLES SA59



PIXEL RETE SA67






PIXEL UNITO SA71



## Curmi 1

Category: Must

DIPLO Composition: 35% CO, 47% VI, 23% PL, 15% LI  

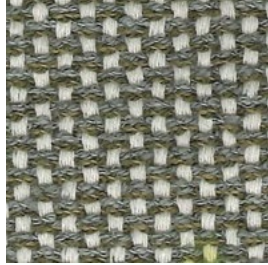
CURMI Composition: 45% CO, 25% PL, 20% VI, 10% LI   

COMO Composition: 52% CO, 25% PL, 15% VI, 8% LI  

TIGLIO Composition: 50% VI, 32% CO, 8% PC, 7% LI, 3% WO  



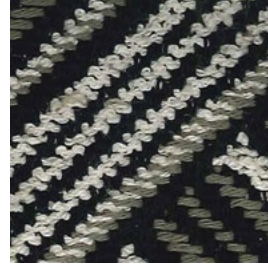
DIPLO MB88



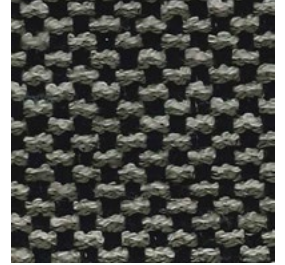
CURMI MB70



CURMI MB91



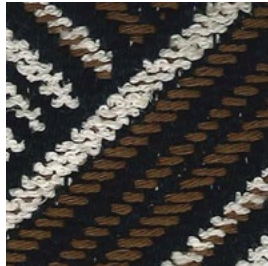
COMO MB60



CURMI MB68



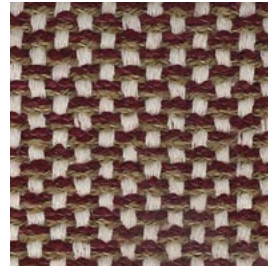
CURMI MB66



COMO MB59



DIPLO MB81



CURMI MB89



DIPLO MB82



TIGLIO MB75




TIGLIO MB74



Curmi 2

Category: Must

DIPLO Composition: 35% CO, 47% VI, 23% PL, 15% LI  

CURMI Composition: 45% CO, 25% PL, 20% VI, 10% LI   

COMO Composition: 52% CO, 25% PL, 15% VI, 8% LI  

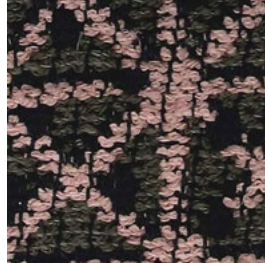
TIGLIO Composition: 50% VI, 32% CO, 8% PC, 7% LI, 3% WO  



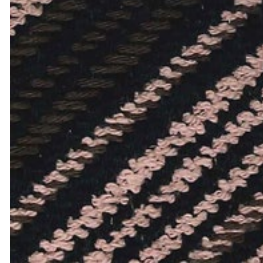
TIGLIO MB76



CURMI MB90



DIPLO MB83



COMO MB61



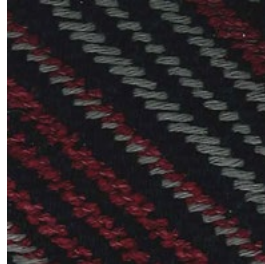
TIGLIO MB80



CURMI MB72



DIPLO MB87



COMO MB65



TIGLIO MB78



CURMI MB71



DIPLO MB86



COMO MB64



TIGLIO MB77




CURMI MB92



DIPLO MB85



COMO MB63

Capri   
Leather - Capri  
Category: Capri



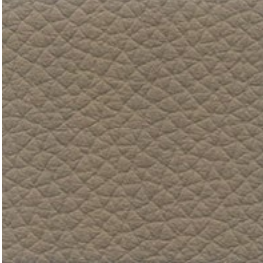
L01



L26



L03



L34



L41



L27



L40



L28



L07



L44



L30



L37



L35



L48



L06



L08



L04



L50




L51



L09



*Ponza*   
*Leather - Nabuk*  
Category: *Ponza*



NABUK

N04



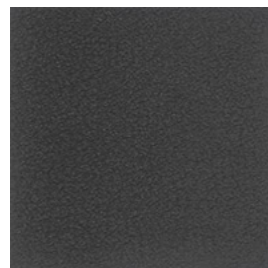
NABUK

N01



NABUK

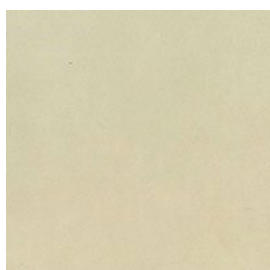
N03



NABUK

N02

*Ponza*   
*Leather - Anilina*  
Category: *Ponza*



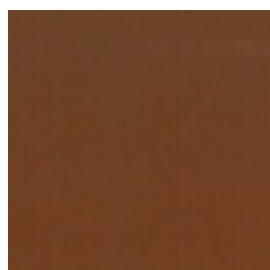
ANILINA

A01



ANILINA

A02



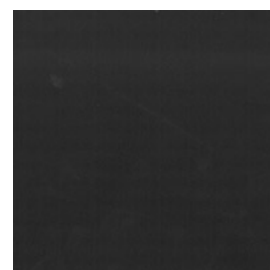
ANILINA

A05



ANILINA

A04



ANILINA

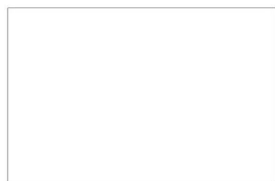
A06



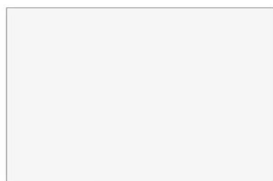
ANILINA

A03

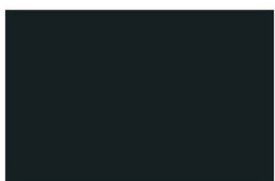
## Metalli verniciati / Painted metals



bianco lucido  
glossy white



bianco opaco  
mat white



nero opaco  
mat black



argento opaco  
mat silver



tortora opaco  
mat dove grey



bordeaux opaco  
mat bordeaux



amaranto opaco  
mat amaranth



marrone opaco  
mat brown



coffee brown opaco  
mat coffee brown



azzurro artico opaco  
mat arctic blue



giallo zafferano opaco  
mat saffron yellow



rosso opaco  
mat red



grigio antracite opaco  
mat anthracite grey



mattone opaco  
matt brick red



verde menta opaco  
mat mint green



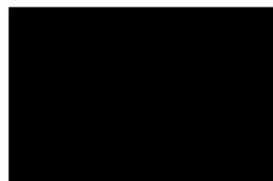
blu opaco  
mat blue



royal blue opaco  
mat royal blue



racing green opaco  
mat racing green

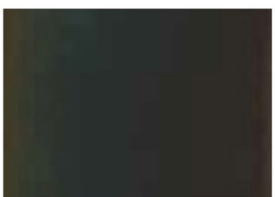


nero lucido  
glossy black

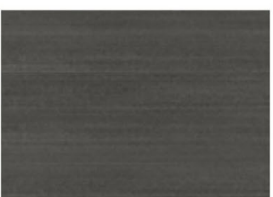


verde opaco  
mat green

## Finiture metalli / Metal finishes



finitura brunito  
burnished finish



finitura decapato  
pickled finish



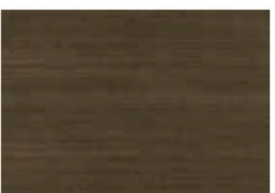
cromato  
chromed



black nichel  
black nickel



alluminio anodizzato nero  
anodized black aluminium



finitura ottone  
brass finish



finitura ottone opaco  
mat brass finish



finitura bronzo-rame  
copper-bronze finish



finitura rame  
copper finish



finitura rame opaco  
mat copper finish